

ADVANTAGES

Desirable Insurance Wise—Fire hazards and risks are reduced to a minimum.

They encourage "MINIMUM MAINTENANCE-FREE" situations in buildings with resulting COST savings.

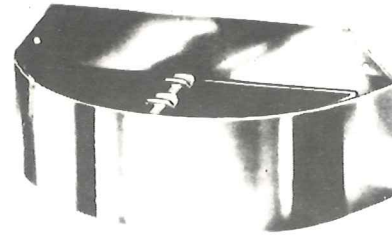
They promote cleanliness and orderliness and offer protection for carpets and floors.

Their regular use reduces dirt contamination of interior decorations.

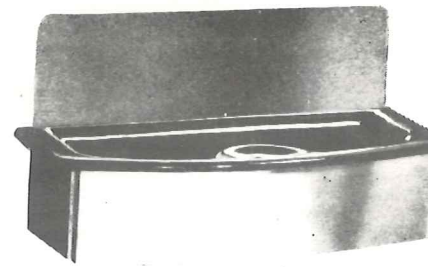
They are offered in a wide range of styles and fittings to suit most needs but we are pleased to quote for more specialised requirements.

They are a "MUST" for all buildings and establishments. Their advantages outweigh the initial cost.

WALL & PILLAR ASH TRAYS

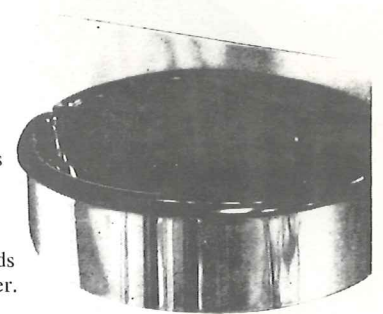


Model W/CE/59
Cigarette End Wall Box
Stainless Steel or Chrome
12×4½ in.



Model W/FS/57
8 in. across 4 in. deep

- ★ Stainless steel frame.
- ★ Loose liner — Black vitreous enamelled with rounded corners to give easily cleaned smooth surface.
- ★ Screwfixing with heads concealed behind liner.



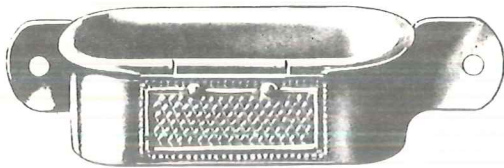
Model W/FS/58
7 in. across 3 in. deep

USEFUL & DISTINCT

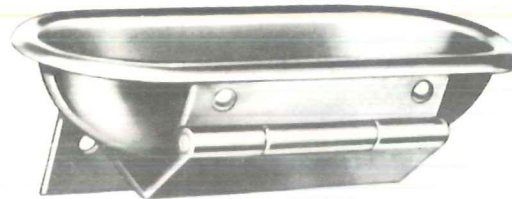
in **OFFICES**
HOMES
CLUBS
SHOPS
WAREHOUSES
WAITING ROOMS
RECEPTION ROOMS
LIFTS
CORIDORS
or on **PILLARS, COLUMNS**
and **CHAIRS**
(chair-back ashtrays:—TIPUP)

SHORTLY AVAILABLE FOR HOTEL USE

OBLONG WALL URNS WITH PUSH-KNOBS FOR OPENING & SPRING LOADED FLAPS. EMPTYING THROUGH DETACHABLE LINING. SIZE 15 in. × 5½ in. × 4½ in.



Model W/H/50
Hinged & Tip-up
Overall 5¼ × 1½ in.



Model W/HB/52
Hinged Bracket Type
size 3¼ × 1½ in.



Model W/BR/49
Bracket Type
size 3¼ × 1¼ in.



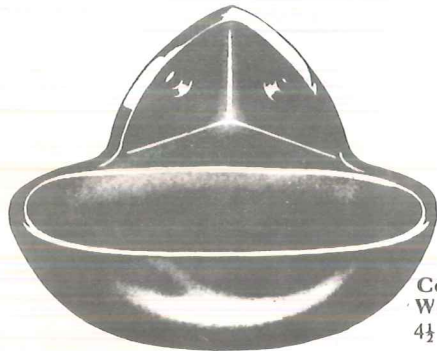
Model W/SF/48
Spring Fixing
size 3¼ × 1½ in.



Model W/P/61
Overall 3¾ in. × 1½ in. o/a



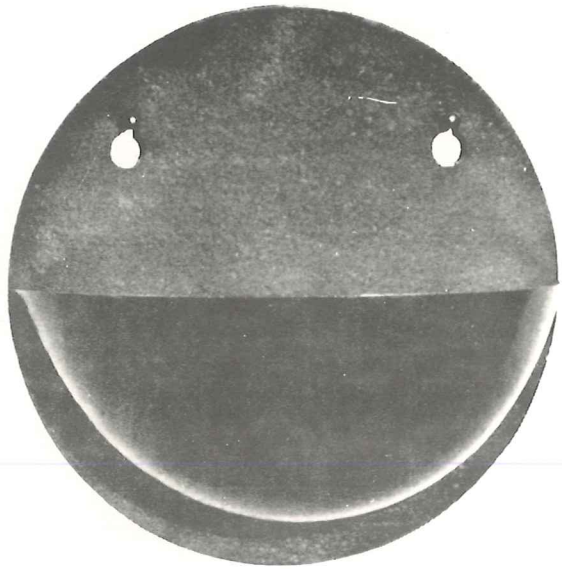
Model W/SC/57
With Spring Clip
size 3¼ × 1½ in.



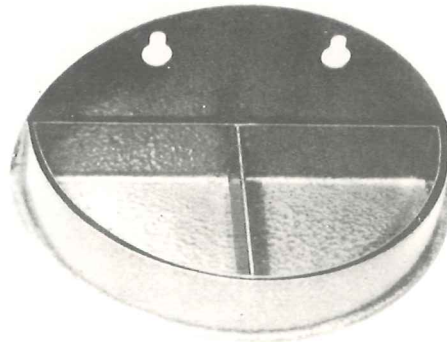
Corner Model W/CO/60
4½ in. o/a



WALL FIXING ASH TRAYS

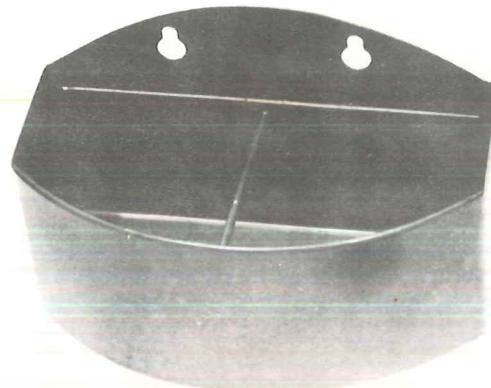


Ball Type Wall Ashtray Model No. W/B/42
As illustrated, with detachable lining.
Size: 6 in. x 6 in. x 3 in. Finishes: Chrome or Enamel



Half-Round Wall Ashtray Model No. W/HR/40
As illustrated, size 6 in. x 3 in. x 1 in., to be secured to wall or pillar. Made from steel, with detachable linings for emptying.
Standard colours: Hammer Bronze, Grey or Chrome
Other colours available.

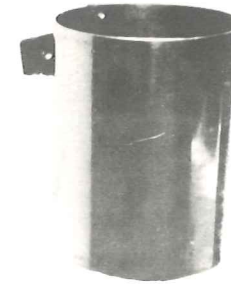
Model No. LW/HR/45 As Model 40, but size:
7½ in. x 3 in. x 1¼ in.



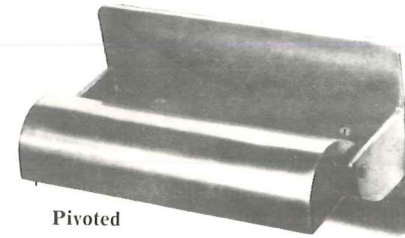
Oblong Wall Ashtray
Model No. W/O/44
As illustrated. Size 6 in. x 3 in. x 2½ in.

STAR QUALITIES

- * FUNCTIONAL IN DESIGN
- * AND HAVE "EYE APPEAL"
- * SAFEGUARD AGAINST FIRE
- * VARIOUS DESIGNS AND SHAPES—BLEND WITH EVERY REQUIREMENT
- * ROBUSTLY CONSTRUCTED
- * ATTRACTIVE FINISHES:— BRONZE, GREY, CHROME, etc.
- * SIMPLE AND PRACTICAL TO USE
- * KEEP PREMISES SAFE CLEAN & TIDY
- * EASY EMPTYING
- * ECONOMICALLY PRICED

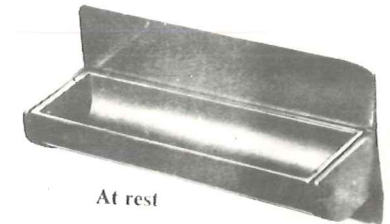


Hygienic Wall Urn
Model W/4/46
Canister Type
Finishes: Chrome, Enamel or Anodised
Swivels upside down for easy emptying
4 in. dia. x 5¼ in. deep



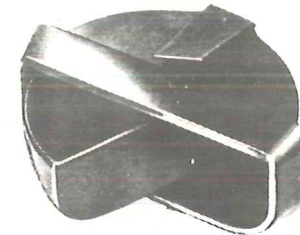
Pivoted

Swivel-Oblong Model W/SWO/54
Length 4 in. Depth 1¼ in.
Width 2 in.
A strong simple design.
Larger size available also.
Ash tray pivots for easy emptying.



At rest

Raised plate at rear of ash tray prevents soiling of walls.
Invisible screw fixing.



Simple - Swivel Type
Smartly mounted for (arm) chairs with inner tray.
Model W/AC/56



Wall Urn Bowl Type
size 8 in. inside dia. x 8¼ in. deep. Tip-up action,
Quickly emptied.
Model W/TIB/55
Finishes: Chrome or Enamel.



Half Round Waste Bins
Steel. 12 in. high, 12½ in. wide, 6 in. back to front.
Model W/HRB/53



ALWAYS IN DEMAND

FOR USE IN BUILDINGS, HOTELS, HALLS, RESTAURANTS, CANTEENS, SCHOOLS, COLLEGES, CINEMAS, CAFES & ALL CATERING ESTABLISHMENTS.

ARCHITECTS & DESIGNERS RECOMMEND THESE ASHTRAYS, WALL URNS & WASTE CONTAINERS BECAUSE THEY ARE OF SENSIBLE PROPORTIONS, WELL MADE AND EASY TO CLEAN & EMPTY.